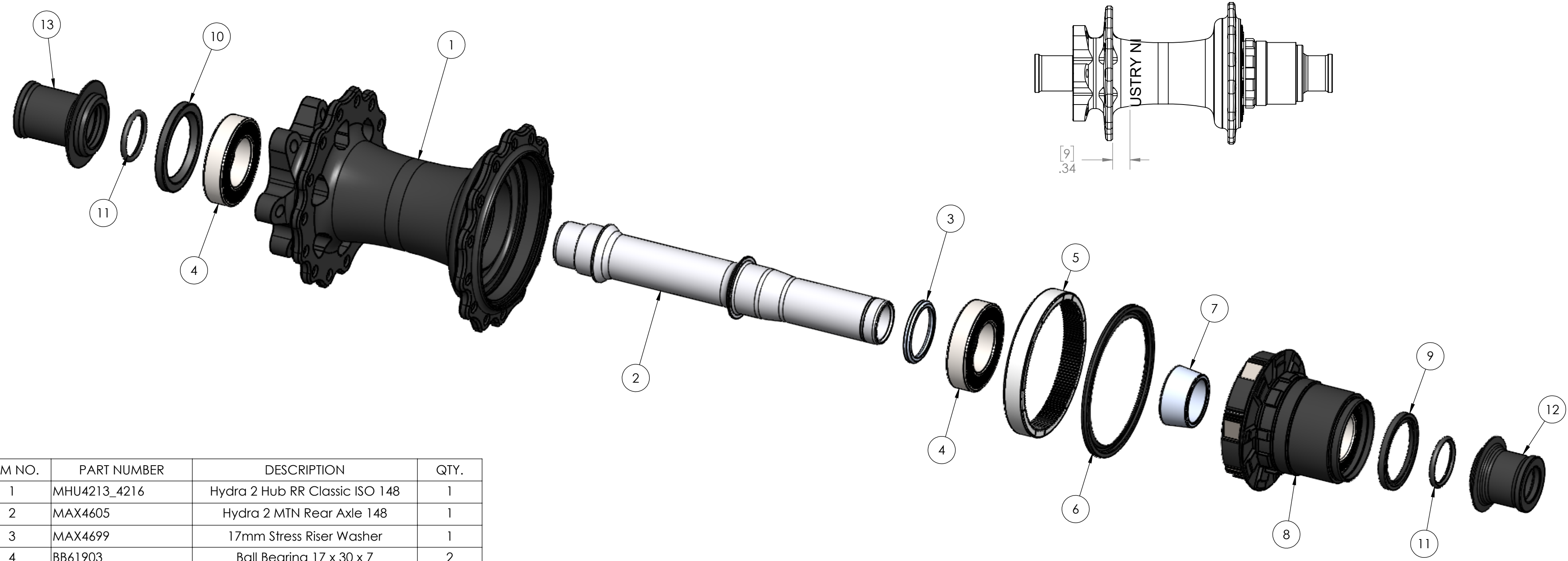
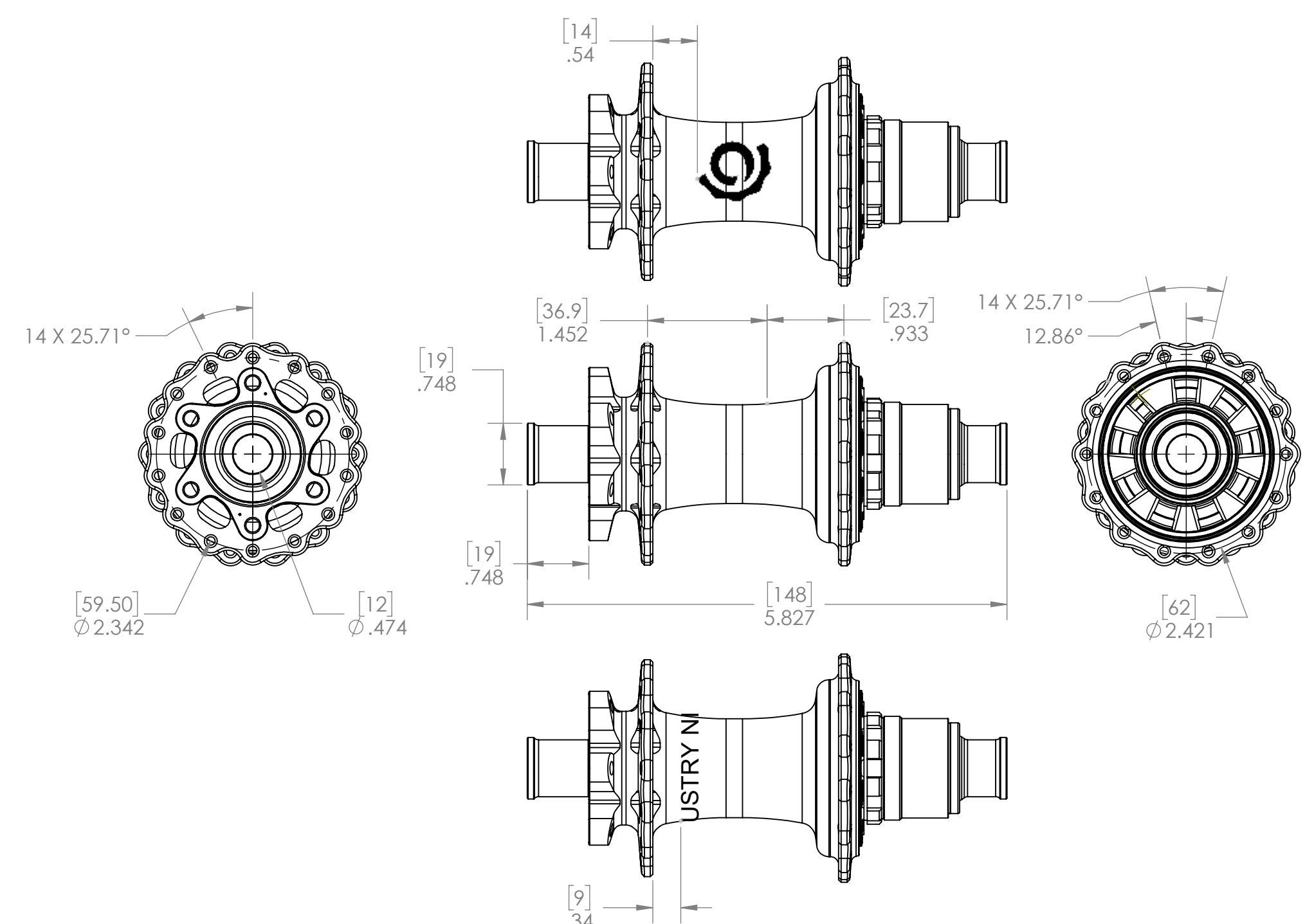
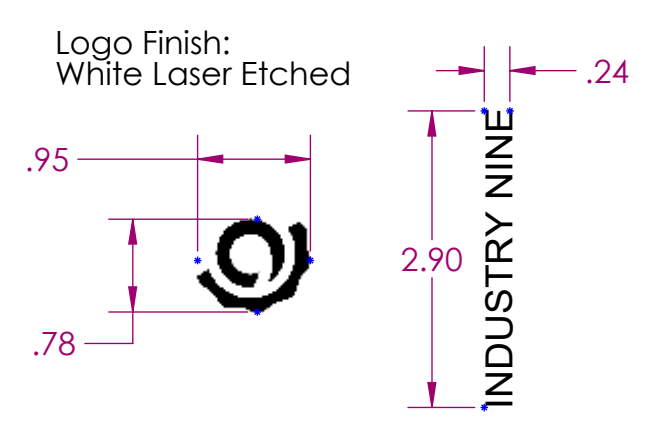


REVISIONS			
ZONE	REV.	DESCRIPTION	DATE

# H3MBXBXE2- Hydra 2 Mountain Rear Hub 28h 12x148 6 Bolt XD



ITEM NO.	PART NUMBER	DESCRIPTION	QTY.
1	MHU4213_4216	Hydra 2 Hub RR Classic ISO 148	1
2	MAX4605	Hydra 2 MTN Rear Axle 148	1
3	MAX4699	17mm Stress Riser Washer	1
4	BB61903	Ball Bearing 17 x 30 x 7	2
5	MFH4531	Hydra 2 145t Drive Ring	1
6	MFH4534	Mountain Freehub Seal	1
7	MFH4535	Hydra 2 External Freehub Spacer	1
8	MKMFH02	Hydra 2 Freehub XD	1
9	OEAX1640	26mm Radial Lip End Cap Seal	1
10	OEAX1641	30mm Radial Lip End Cap Seal	1
11	HAXOR916	O-Ring 1/16 x 9/16	2
12	RAX3637	SL-Hydra-1/1 12x142_148_157 End Cap Rear DS SL	1
13	RAX3646	SL End Cap Rear NDS	1



**PROPRIETARY AND CONFIDENTIAL**  
THE INFORMATION CONTAINED IN THIS DRAWING IS THE SOLE PROPERTY OF INDUSTRY NINE COMPONENTRY. ANY REPRODUCTION IN PART OR AS A WHOLE WITHOUT THE WRITTEN PERMISSION OF INDUSTRY NINE COMPONENTRY IS PROHIBITED.

UNLESS OTHERWISE SPECIFIED:		NAME	DATE
DIMENSIONS ARE IN INCHES	DRAWN		
TOLERANCES:	CHECKED		
FRACTIONAL ±	ENG APPR.		
ANGULAR: MACH ±	MFG APPR.		
BEND ±	Q.A.		
TWO PLACE DECIMAL ±	COMMENTS:		
THREE PLACE DECIMAL ±			
INTERPRET GEOMETRIC TOLERANCING PER:			
MATERIAL			
FINISH			
APPLICATION			
DO NOT SCALE DRAWING			

**INDUSTRY NINE**

TITLE:  
**Hydra 2 Mountain Rear Hub 28h 12x148 6 Bolt XD**

SIZE DWG. NO. REV  
**C H3MBXBXE2**

SCALE: 1:2 WEIGHT: SHEET 1 OF 1