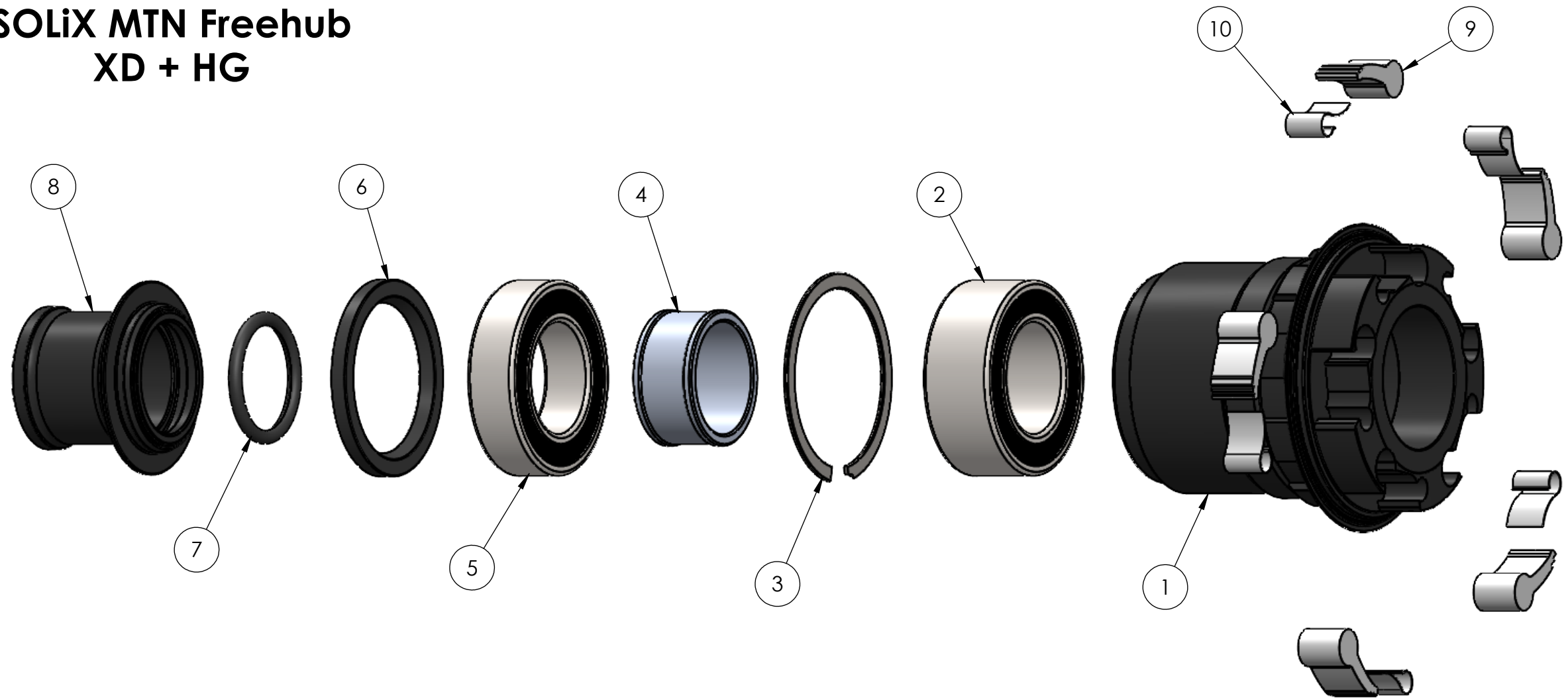


SOLiX MTN Freehub XD + HG

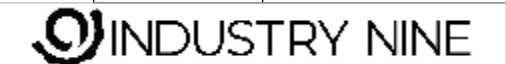


| ITEM NO. | PART NUMBER | DESCRIPTION | QTY. |
|----------|-------------|--|------|
| 1 | RFH35XX | Solix MTN Freehub - See Freehub Spec Table | 1 |
| 2 | BB152610 | Ball Bearing 15 x 26 x 10 DR | 1 |
| 3 | TFH518 | Smalley VHM-26-S02 | 1 |
| 4 | RFH3516 | Solix MTN FHB Spacer | 1 |
| 5 | BB15267A5 | Ball Bearing 15 x 26 x 7 | 1 |
| 6 | OEAX1640 | 26mm Radial Lip End Cap Seal | 1 |
| 7 | HAXOR916 | O-Ring 1/16 x 9/16 | 1 |
| 8 | RAX3637 | SL-Hydra-1/1 12x142_148_157 End Cap Rear DS SL | 1 |
| 9 | RFH3532 | Solix Pawl | 5 |
| 10 | HFH2533 | Hydra - 1/1 - Solix Pawl Spring | 5 |

| Freehub Spec | |
|--------------|--------|
| P/N | Desc. |
| RFH3515 | MTN XD |
| RFH3513 | MTN HG |

PROPRIETARY AND CONFIDENTIAL
THE INFORMATION CONTAINED IN THIS DRAWING IS THE SOLE PROPERTY OF INDUSTRY NINE COMPONENTRY. ANY REPRODUCTION IN PART OR AS A WHOLE WITHOUT THE WRITTEN PERMISSION OF INDUSTRY NINE COMPONENTRY IS PROHIBITED.

| UNLESS OTHERWISE SPECIFIED: | | NAME | DATE |
|--|---------|-----------|------|
| DIMENSIONS ARE IN INCHES TOLERANCES: FRACTIONAL: ± 1/32 ANGULAR: ± 0.5 deg TWO PLACE DECIMAL ±0.01 THREE PLACE DECIMAL ±0.005 | | DRAWN | |
| INTERPRET GEOMETRIC TOLERANCING PER: | | CHECKED | |
| MATERIAL | | ENG APPR. | |
| FINISH | | MFG APPR. | |
| NEXT ASSY | USED ON | Q.A. | |
| APPLICATION | | COMMENTS: | |
| DO NOT SCALE DRAWING | | | |



| | | |
|------------|----------|--------------|
| TITLE: | | |
| SIZE | DWG. NO. | REV |
| B | | |
| SCALE: 2:1 | WEIGHT: | SHEET 1 OF 1 |