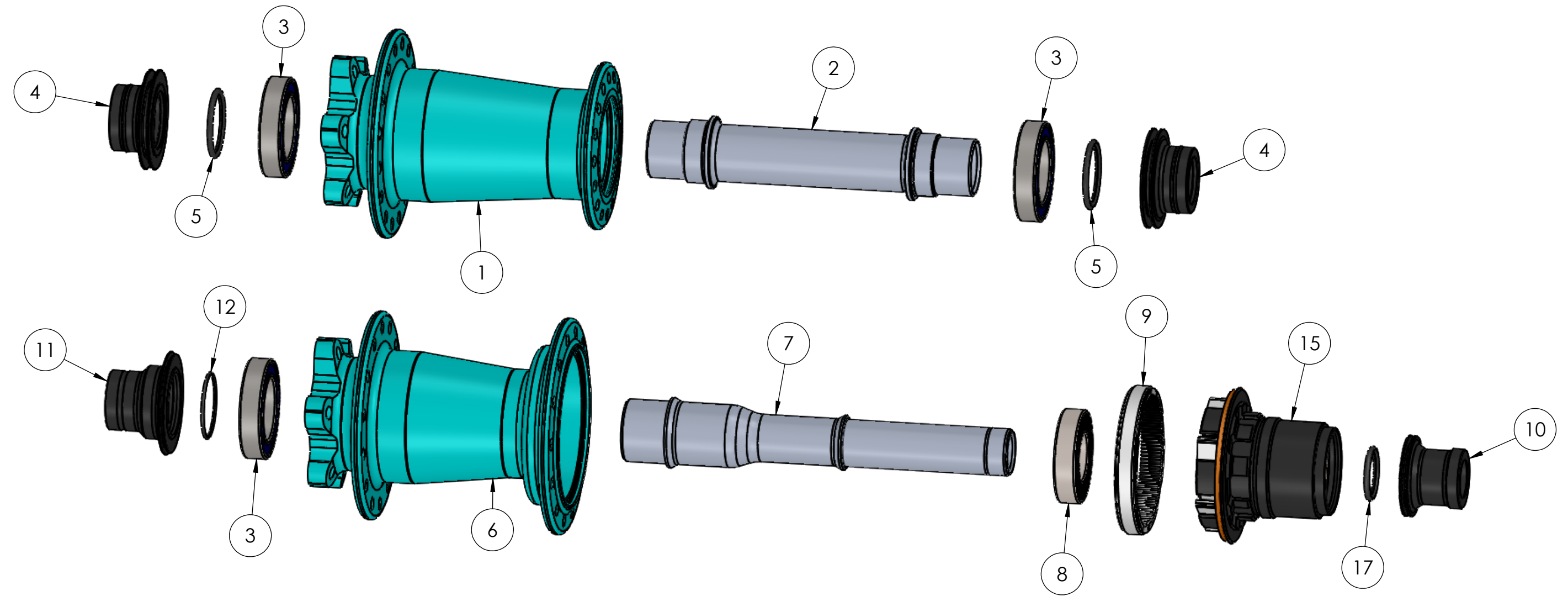


4

3

2

1



| ITEM NO. | PART NUMBER | DESCRIPTION | QTY. |
|----------|-------------|--|------|
| 1 | THU214 215 | Torch Classic FR Hub Boost 110 | 1 |
| 2 | HAX2600 | Hydra MTN Axle Front 110 Boost | 1 |
| 3 | BB61804 | Ball Bearing 20 x 32 x 7 | 3 |
| 4 | HAX2622 | Hydra End Cap FR 15mm ISO | 2 |
| 5 | T2AXOR34 | 1/16 x 3/4 O-Ring | 2 |
| 6 | THU213 216 | Hub Shell, Torch Classic Boost | 1 |
| 7 | HAX2605 | Hydra Axle MTN RR Boost 148 | 1 |
| 8 | BB15307A5 | Ball Bearing 15 x 30 x 7 | 1 |
| 9 | HFH2531 | Hydra 115t Drive Ring | 1 |
| 10 | HAX2637 | Hydra/101 12x142_148_157 End Cap Rear Drive Side | 1 |
| 11 | HAX2646 | Hydra 12x142_148_157 End Cap Rear Non Drive Side | 1 |
| 12 | TAXOR20 | O-Ring 20 X 1 | 1 |
| 13 | HFHXXX | Hydra Freehub - See Freehub BOM | 1 |

PROPRIETARY AND CONFIDENTIAL
 THE INFORMATION CONTAINED IN THIS DRAWING IS THE SOLE PROPERTY OF INDUSTRYNINE COMPONENTRY. ANY REPRODUCTION IN PART OR AS A WHOLE WITHOUT THE WRITTEN PERMISSION OF INDUSTRYNINE COMPONENTRY IS PROHIBITED.

Hydra Mountain Hubset 6 Bolt

| | | | | | |
|-------------|---------|--|-----------|-----------|---------------------------------|
| | | UNLESS OTHERWISE SPECIFIED: | NAME | DATE | |
| | | DIMENSIONS ARE IN INCHES TOLERANCES: FRACTIONAL: ± 1/32 ANGULAR: ± 0.5 deg TWO PLACE DECIMAL ±0.01 THREE PLACE DECIMAL ±0.005 | DRAWN | | |
| | | INTERPRET GEOMETRIC TOLERANCING PER: | CHECKED | | SIZE DWG. NO. REV |
| | | MATERIAL | ENG APPR. | | |
| NEXT ASSY | USED ON | FINISH | MFG APPR. | | SCALE: 1:4 WEIGHT: SHEET 1 OF 1 |
| APPLICATION | | DO NOT SCALE DRAWING | Q.A. | COMMENTS: | |

4

3

2

1

B

B

A

A